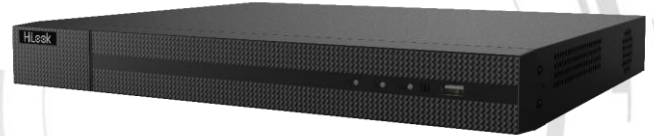


## DVR-232Q-M2 TURBO HD DVR

### Key Features

- Deep learning-based motion detection 2.0 for all analog channels
- H.265 Pro+/H.265 Pro/H.265 video compression
- HDTVI/AHD/CVI/CVBS/IP video input
- Audio via coaxial cable
- Up to 40-ch IP camera inputs
- Up to 10 TB capacity per HDD



### Compression and Recording

- H.265 Pro+ can be enabled to improve encoding efficiency and reduce data storage costs
- Full channel recording at up to 4 MP lite resolution

### Storage and Playback

- 2 SATA interfaces
- Smart search for efficient playback

### Smart Function

- Support multiple VCA (Video Content Analytics) events for both analog and smart IP cameras

### Network & Ethernet Access

- HiLookVision & DDNS (Dynamic Domain Name System) for easy network management
- Max. 96 Mbps incoming bandwidth and output bandwidth limit configurable

## Specification

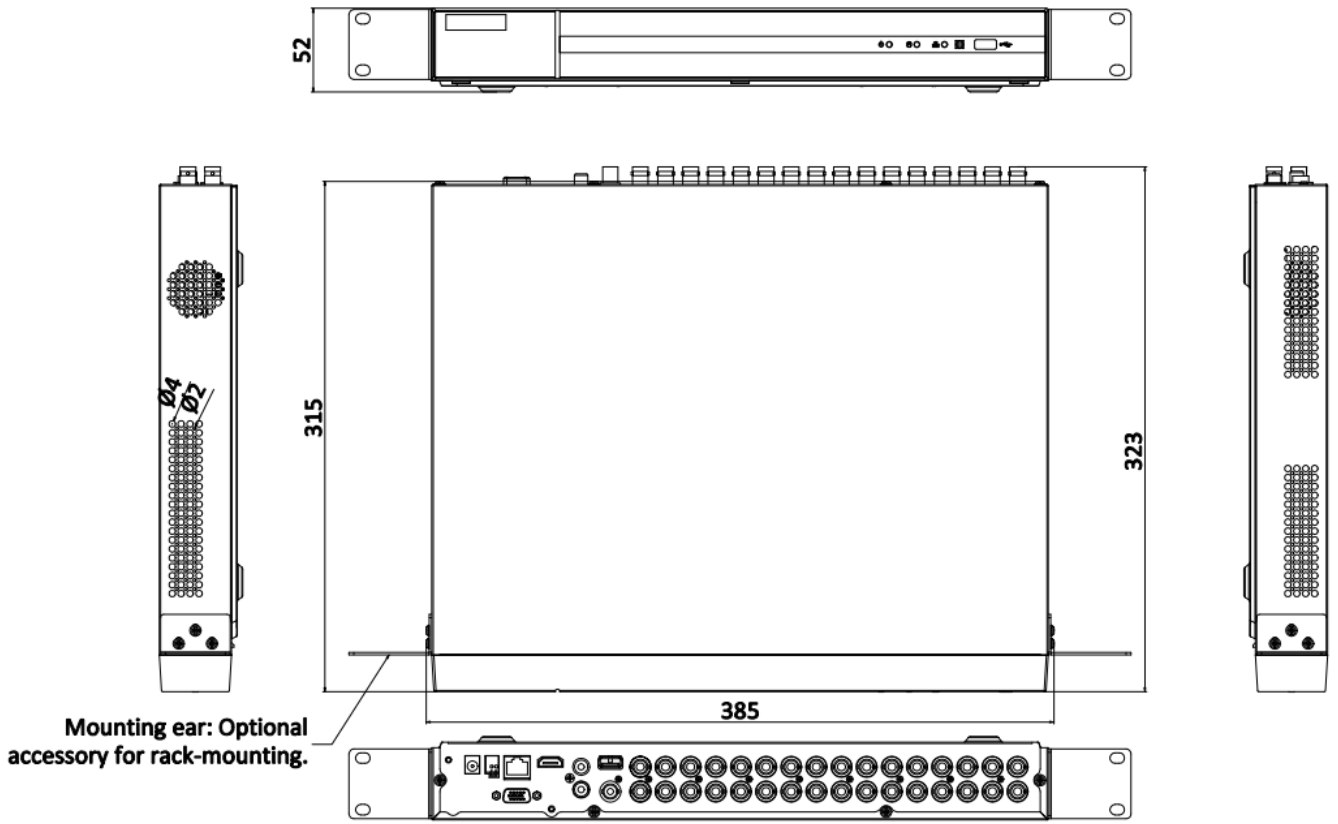
<b>Model</b>	<b>DVR-232Q-M2</b>
<b>Motion Detection 2.0</b>	
<b>Human/Vehicle Analysis</b>	Deep learning-based motion detection 2.0 is enabled by default for all analog channels, it can classify human and vehicle, and extremely reduce false alarms caused by objects like leaves and lights; Quick search by object or event type is supported;
<b>Recording</b>	
<b>Video compression</b>	H.265 Pro+/H.265 Pro/H.265/H.264+/H.264
<b>Encoding resolution</b>	When 1080p lite mode is not enabled: 4 MP lite/1080p/720p/VGA/WD1/4CIF/CIF When 1080p lite mode is enabled: 4 MP lite/3 MP/1080p lite/720p lite/VGA/WD1/4CIF/CIF
<b>Frame rate</b>	Main stream: When 1080p Lite mode is not enabled: 4 MP lite/1080p@15 fps; 720p/VGA/WD1/4CIF/CIF@25 fps (P)/30 fps (N) When 1080p Lite mode is enabled: 4 MP lite@15 fps; 1080p lite/720p lite/VGA/WD1/4CIF/CIF@25 fps (P)/30 fps (N) Sub-stream: WD1/4CIF@12 fps; CIF@25 fps (P)/30 fps (N)
<b>Video bit rate</b>	32 Kbps to 6 Mbps
<b>Dual stream</b>	Support
<b>Stream type</b>	Video, Video & Audio
<b>Audio compression</b>	G.711u
<b>Audio bit rate</b>	64 Kbps
<b>Video and Audio</b>	
<b>IP video input<sup>1</sup></b>	2-ch (up to 34-ch)  Enhanced IP mode on: 8-ch (up to 40-ch), each up to 4 Mbps Up to 6 MP resolution Support H.265+/H.265/H.264+/H.264 IP cameras
<b>Analog video input</b>	32-ch BNC interface (1.0 Vp-p, 75 Ω), supporting coaxitron connection
<b>HDTV input</b>	3K(2960 x 1665)@20 fps, 5 MP(2560 x 1944)@20 fps, 4 MP(2560 x 1440)@30 fps, 4 MP(2560 x 1440)@25 fps, 1080p@30 fps, 1080p@25 fps, 720p@30 fps, 720p@25 fps
<b>AHD input</b>	5 MP(2560 x 1944)@20 fps, 4 MP(2560 x 1440)@30 fps, 4 MP(2560 x 1440)@25 fps, 1080p@30 fps, 1080p@25 fps, 720p@30 fps, 720p@25 fps
<b>HDCVI input</b>	5 MP(2592 x 1944)@20 fps, 4 MP(2560 x 1440)@30 fps, 4 MP(2560 x 1440)@25 fps, 1080p@30 fps, 1080p@25 fps, 720p@30 fps, 720p@25 fps
<b>CVBS input</b>	PAL/NTSC
<b>CVBS output</b>	1-ch, BNC (1.0 Vp-p, 75 Ω), resolution: PAL: 704 x 576, NTSC: 704 x 480
<b>VGA output</b>	1-ch, 1920 x 1080/60Hz, 1280 x 1024/60Hz, 1280 x 720/60Hz
<b>HDMI output</b>	1-ch, 1920 x 1080/60Hz, 1280 x 1024/60Hz, 1280 x 720/60Hz, 1024 x 768/60Hz
<b>Video output mode</b>	HDMI and VGA simultaneous output

<b>Audio input</b>	1-ch, RCA (2.0 Vp-p, 1 K $\Omega$ )
	32-ch via coaxial cable
<b>Audio output</b>	1-ch, RCA (Linear, 1 K $\Omega$ )
<b>Two-way audio</b>	1-ch, RCA (2.0 Vp-p, 1 K $\Omega$ ) (using the first audio input)
<b>Synchronous playback</b>	16-ch
<b>Network</b>	
<b>Total bandwidth</b>	128 Mbps
<b>Incoming bandwidth (Enhanced IP mode)</b>	96 Mbps
<b>Remote connection</b>	128
<b>Network protocol</b>	TCP/IP, PPPoE, DHCP, HiLookVision, DNS, DDNS, NTP, SADP, NFS, iSCSI, UPnP™, HTTPS, ONVIF
<b>Network interface</b>	1, RJ45 10M/100M/1000M self-adaptive Ethernet interface
<b>Auxiliary interface</b>	
<b>SATA</b>	2 SATA interfaces
<b>Capacity</b>	Up to 10 TB capacity for each disk
<b>Serial interface</b>	1 RS-485 (full-duplex)
<b>USB interface</b>	Front panel: 1 × USB 2.0, rear panel: 1 × USB 3.0
<b>Alarm in/out</b>	N/A (optional to support)
<b>General</b>	
<b>Power supply</b>	12 VDC, 3.3 A
<b>Consumption (without HDD)</b>	≤ 40 W
<b>Working temperature</b>	-10 °C to +55 °C (+14 °F to +131 °F)
<b>Working humidity</b>	10% to 90%
<b>Dimension (W × D × H)</b>	385 × 315 × 52 mm (15.2 × 12.4 × 2.0 inch)
<b>Weight (without HDD)</b>	≤ 2 kg (4.4 lb.)

**Note:**

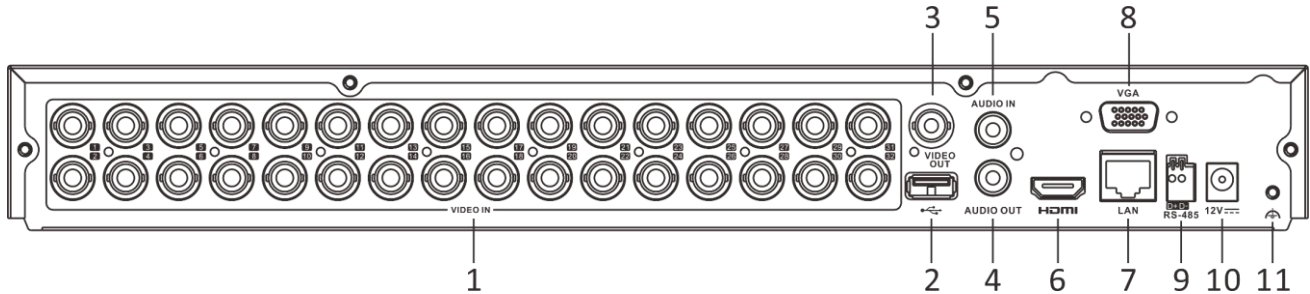
1: Enhanced IP mode might be conflicted with smart events (perimeter protection) or other functions, please refer to the user manual for details.

## Dimension



scale/1:1;Unit/mm

## Physical Interface



No.	Description	No.	Description
1	Video and Coaxial Audio In	7	LAN Network Interface
2	USB Interface	8	VGA Interface
3	VIDEO OUT	9	RS-485 Interface
4	AUDIO OUT, RCA Connector	10	Power Input
5	AUDIO IN, RCA Connector	11	GND
6	HDMI Interface		

## Available Model

DVR-232Q-M2