



2.4G Wireless Camera Quick Start Guide



Contents

Scan QR Code to download Mobile phone APP “CamHi” for Android and iPhone.....	1 -
Use camera in Hot spot mode as a standalone system.....	2 -
Connect this Wi-Fi camera into home wireless router for remote access via APP.....	4 -
Connect this Wi-Fi camera into home router via Cat5e wired RJ-45 connector.....	7 -
Remote access to camera via PC.....	8 -
Working with IE web browser.....	10 -
Working with NVR or third-partly video software.....	10 -

Scan QR Code to download Mobile phone APP “CamHi” for Android and iPhone

Search “CamHi” in Google Play Market or Apple APP Store and download mobile APP, or tap the mobile phone QR Code Scanner to scan the follow icons depending on your phone type.

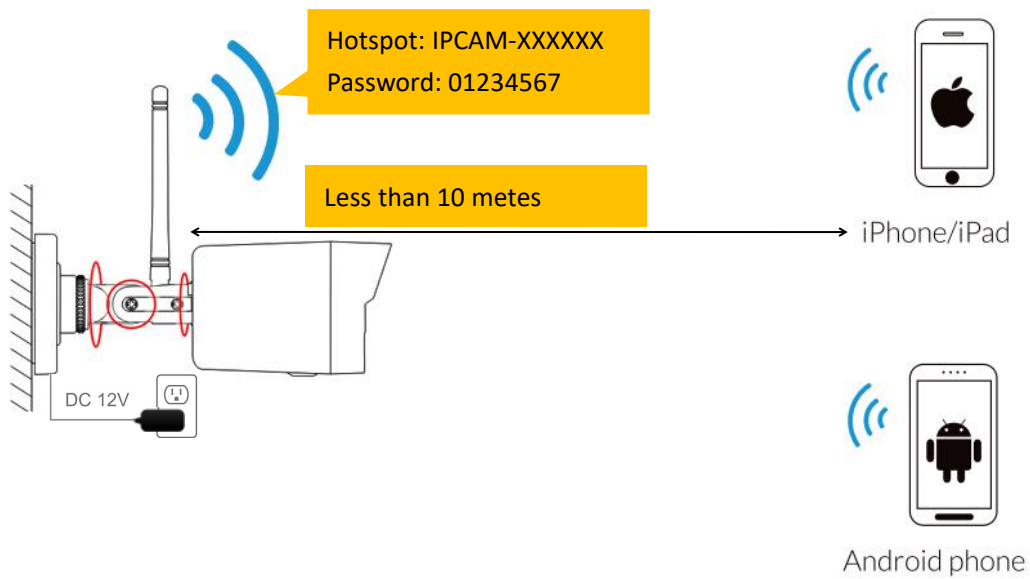


Android



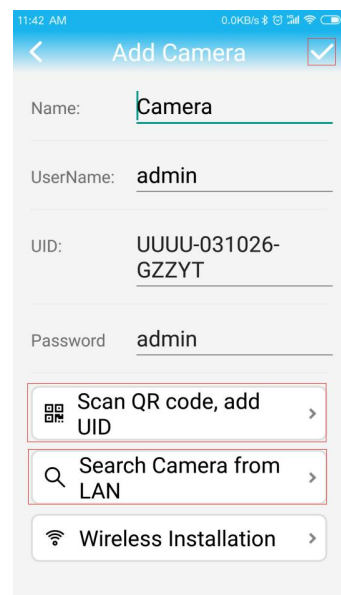
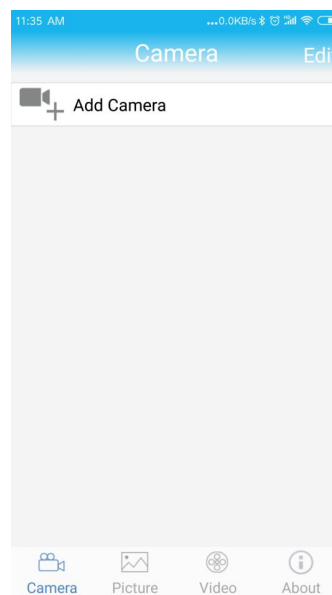
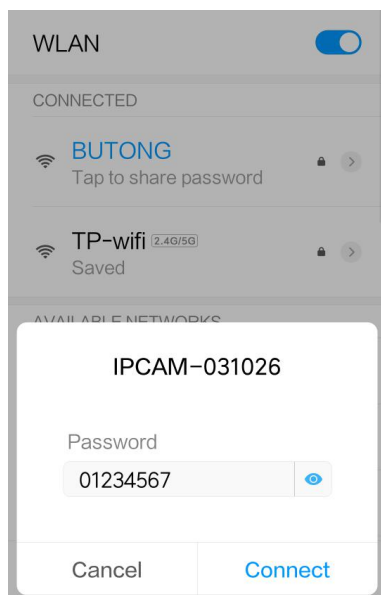
iPhone/ios

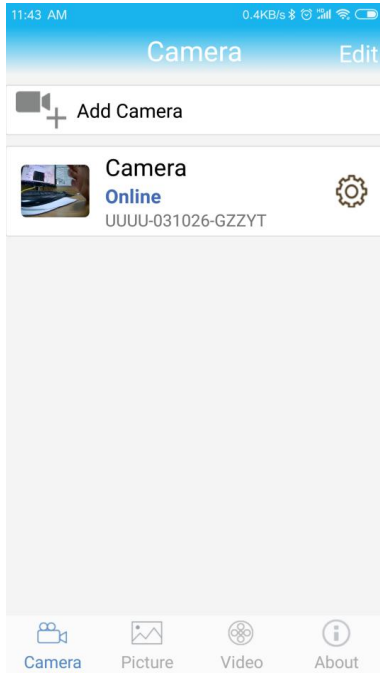
Use camera in Hot spot mode as a standalone system



Steps:

1. Insert a Micro-SD memory card into the camera SD slot if video storage is needed. Plug the included power adapter into one of the electrical outlet, then connect the other end 12VDC cylinder stub to the camera. Camera will start up in one minute and create an Wi-Fi hot spot named like "IPCAM-XXXXXX".(Default Password: 01234567)
2. connect the Wi-Fi "IPCAM-XXXXXX" via mobile phone near the camera less than 10 meters . If the hot spot don't show on mobile phone, reset wireless camera via holding the rear cable reset button more than 5 seconds.
3. tap to run the **CamHi** APP and click add camera.
4. scan camera QR code or search LAN to quickly add camera.
5. tap camera list to start live.
6. it's strong suggest to setup a complex security WPA/WPA2 password for camera Wi-Fi hot-spot.



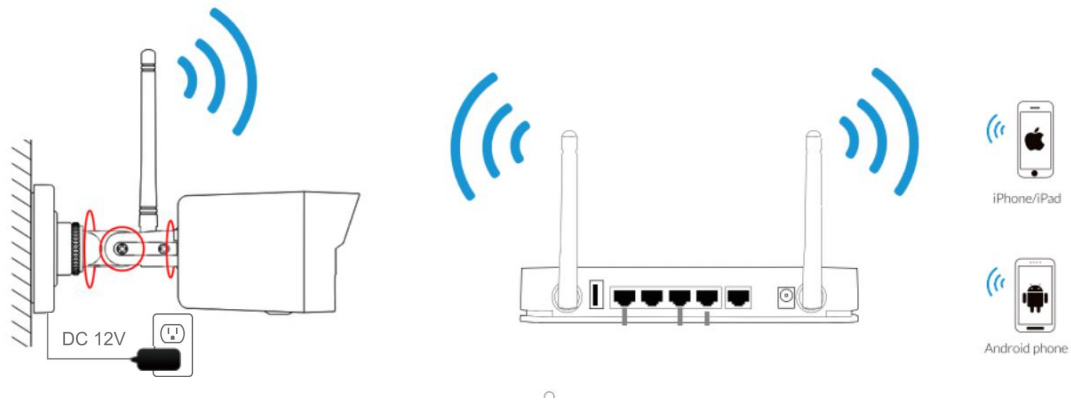


Note: In hot spot mode, please keep the mobile phone near the camera less than 10 meters for a good experience.

Connect this Wi-Fi camera into home wireless router for remote access via APP

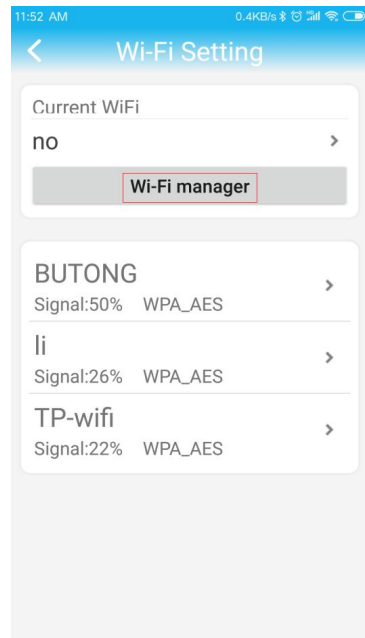
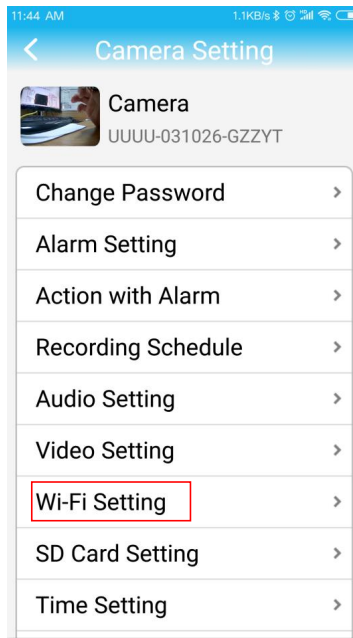
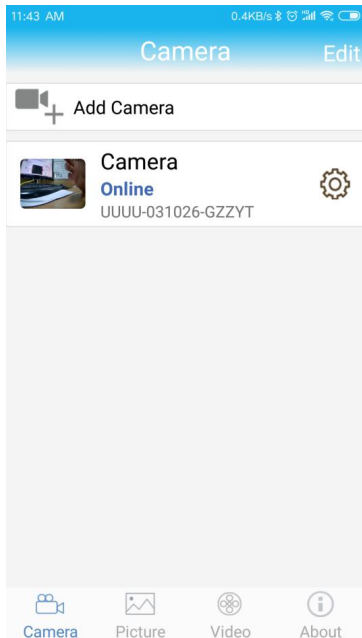
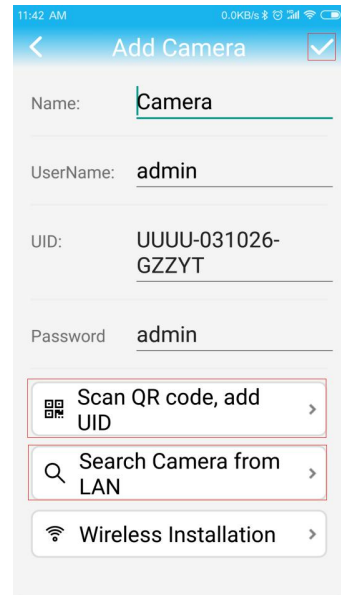
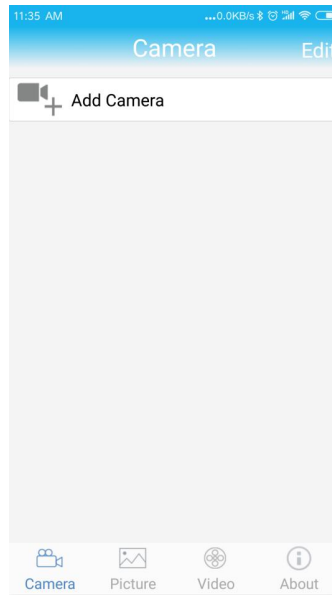
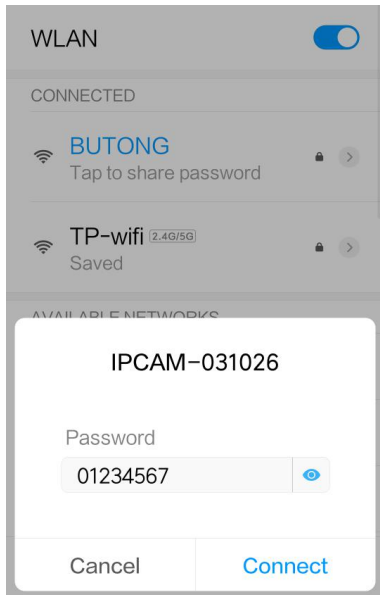
Note:

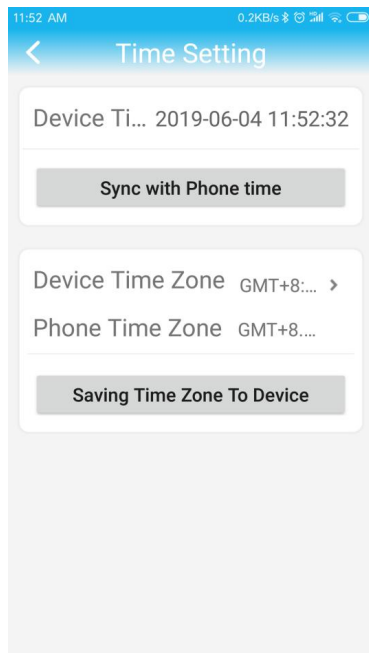
Before screwing the camera on the wall, it's necessary to test the Wi-Fi signal strength of router via mobile phone at the same position where the camera will be installed. Make sure the router Wi-Fi signal supports 2.4GHz and it's strong enough, at least two cells showing on the mobile phone, that can easy access Internet via the mobile Wi-Fi connection. Otherwise , if the Wi-Fi is too weak please connect the camera using the rear RJ-45 CAT5e wired female connector instead .



Steps:

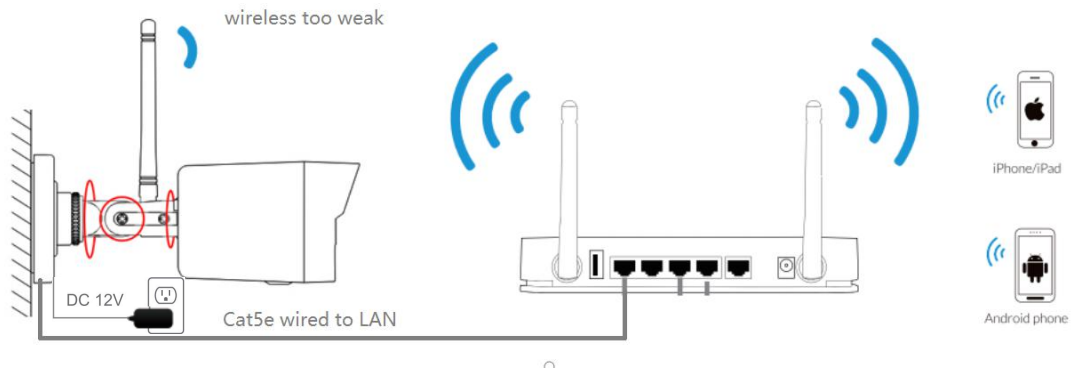
1. Insert a Micro-SD memory card into the camera SD slot if video storage is needed. Plug the included power adapter into one of the electrical outlet, then connect the other end 12VDC cylinder stub to the camera. Camera will start up in one minute and create an Wi-Fi hot spot named like "IPCAM-XXXXXX".(Default Password: 01234567)
2. connect the Wi-Fi "IPCAM-XXXXXX" via mobile phone near the camera less than 10 meters . If the hot spot don't show on mobile phone, reset wireless camera via holding the rear cable reset button more than 5 seconds.
3. tap to run the **CamHi** APP and click **Add camera**.
4. scan camera QR code or search LAN to quickly add camera.
5. tap **Setting** button goto **Wi-Fi Setting**, choose your Wi-Fi name and input correct password.
6. after a few seconds camera will connect to your router and get online soon.
7. tap camera list to start live.
8. it's strong suggest to set a security password, and select your local time-zone to finish setup.





Now you can access to the camera anytime and anywhere if your Internet is available.


Connect this Wi-Fi camera into home router via Cat5e wired RJ-45 connector



If your router wireless is too weak at the camera installation position, you can also connect this camera to router via Cat5e wired RJ-45 connector as an alternative.

Remote access to camera via PC

Steps:

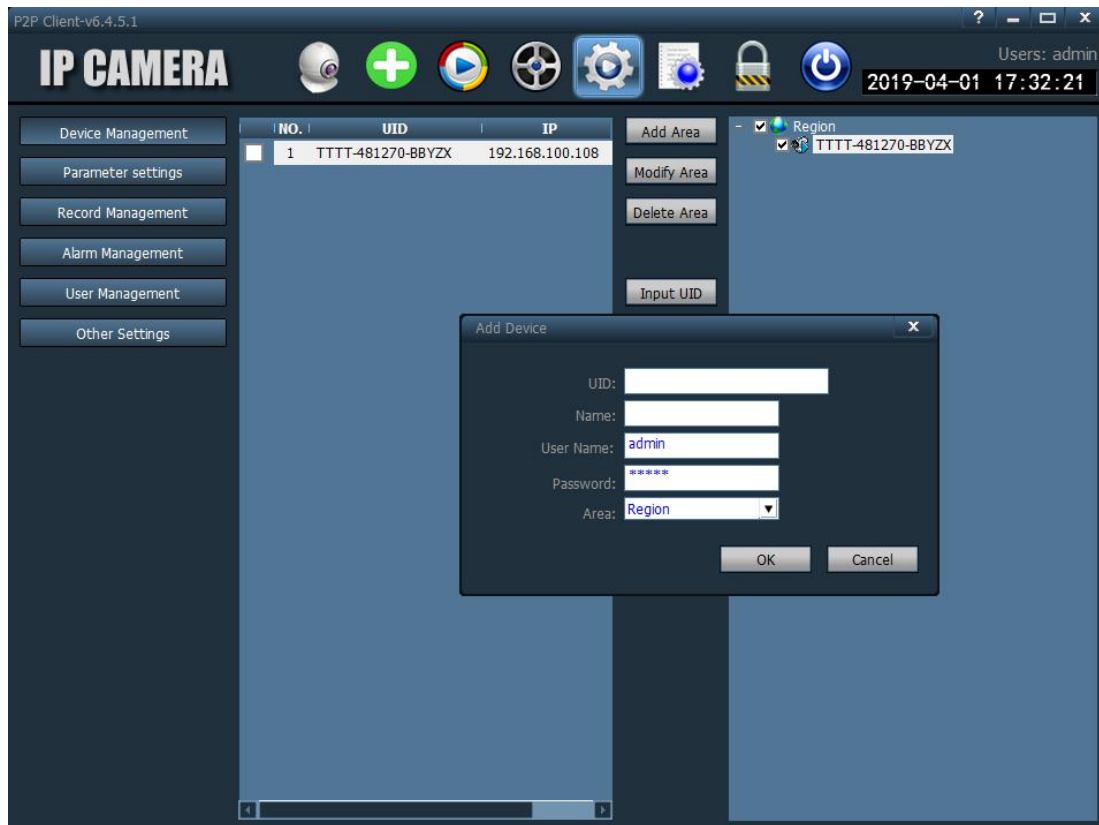
1. download and install the HiP2P Client software to PC.
2. launch the client software , by default, no password for login. All the camera in the local area network will be added automatically in one minutes. *(if nothing shows, please go to configuration, click **Search LAN** button and add it manually)*



The screenshot displays the HiP2P Client software interface. The title bar reads "P2P Client-v6.4.5.1". The main window is titled "IP CAMERA" and shows a user logged in as "admin" at "2019-04-01 17:22:53". The interface is divided into several sections:

- Left Panel:** A "List" section showing a tree view with "Region", "TTTT-481270-BBYZX", "Current Screen", and "1-TTTT-481270-BBYZX [Online]". Below this is a "PTZ" control panel with directional arrows and a "PRESET" button.
- Main View:** A 2x2 grid of camera feeds. The top-left feed shows a camera view of a ceiling with a diamond pattern. The other three feeds are black with the text "No Video".
- Bottom Panel:** A search bar and a table of events.

Source	Time	Event
TTTT-481270-BBYZX	19-04-01 17:22:17	Start Motion Alarm
TTTT-481270-BBYZX	19-04-01 17:22:15	Connect Success!
TTTT-481270-BBYZX	19-04-01 17:22:14	Is connecting...



Note:

1. If the PC is located in different Network, you should click Input UID button and input your the camera ID and name manually.
2. If there is no router in the network, the camera will set it's own IP address to 192.168.1.88, so the PC also should setup a static IP address like 192.168.1.xx for network communication.
3. for more functions details please refer to the HIP2P-CMS-User-Manual

Working with IE web browser



Default Login user name: admin

Default Login password: admin



Working with NVR or third-party video software

This series Wi-Fi camera is ONVIF compatible that it means many NVR or third-party video software can add it and works together. It's recommended to setup a static IP address on camera when using NVR or computer video manage software for a long time video storage or redundancy storage.